

# Ice Flight Photos

as of 17 February 2011

Photos by United States Coast Guard Auxiliary Air Patrol



Corrections and Annotations by John A Sperr



[jsperr@hriyc.org](mailto:jsperr@hriyc.org)   [www.hriyc.org](http://www.hriyc.org)



# (1) Shrewsbury and Navesink Rivers

➤ 28 JAN 2011



## (2) Sandy Hook Bay

➤ 28 JAN 2011



## (3) Lower New York Bay

➤ OPEN water, no photo available



## (4) Upper New York Bay

➤ OPEN water, no photo available



## (5) Newark Bay

➤ OPEN water, no photo available



## (6) Throgs Neck Bridge

➤ OPEN water, no photo available





# (7) George Washington Bridge

➤ 06 FEB 2011





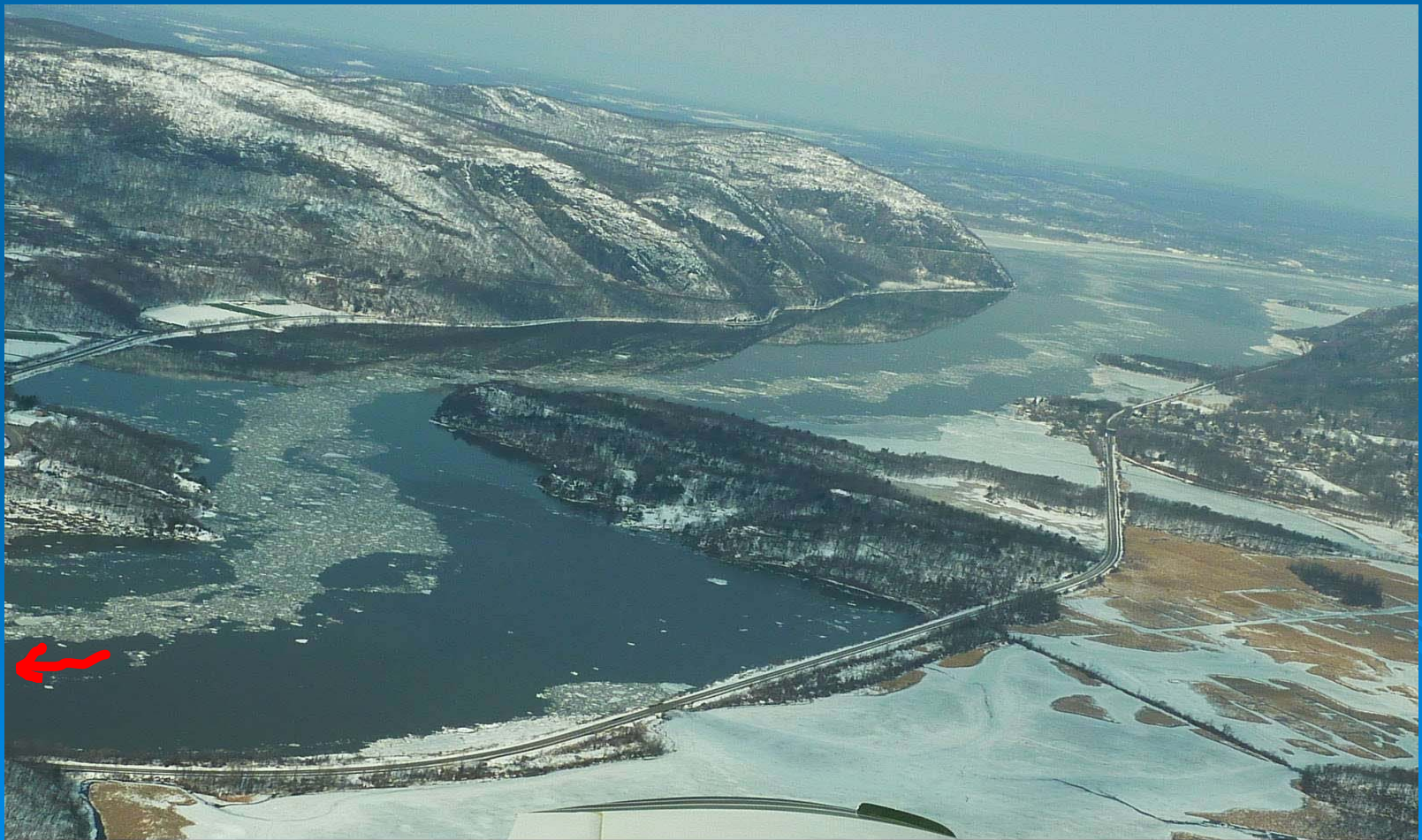
# (8)Tappan Zee Bridge

06 FEB 2011



# (9) West Point (Choke Point)

17 FEB 2011



41-23 N





# (10) Newburgh Bridge

17 FEB 2011



41-  
Che

Flight List has the wrong  
coordinates for the bridge.

2/17/2011 #10 Hudson - Newburgh Bridge 41-33N



# (11) Poughkeepsie

17 FEB 2011





# (12) Crum Elbow (Choke Point)

17 FEB 2011



2/17/2011 #12 Hudson - Crum Elbow (Choke Pt) 41-45N

# (13) Hyde Park Anchorage (Choke Point)

17 FEB 2011





# (14) Esopus Meadows (Choke Point)

17 FEB 2011



2/17/2011 □ #14 □ Hudson - □ Esopus Meadow (Choke Pt) □ 41-52N



# (15) Kingston

17 FEB 2011



2/17/2011 #15 Hudson - Kingston 41-56N

# (16) Saugerties

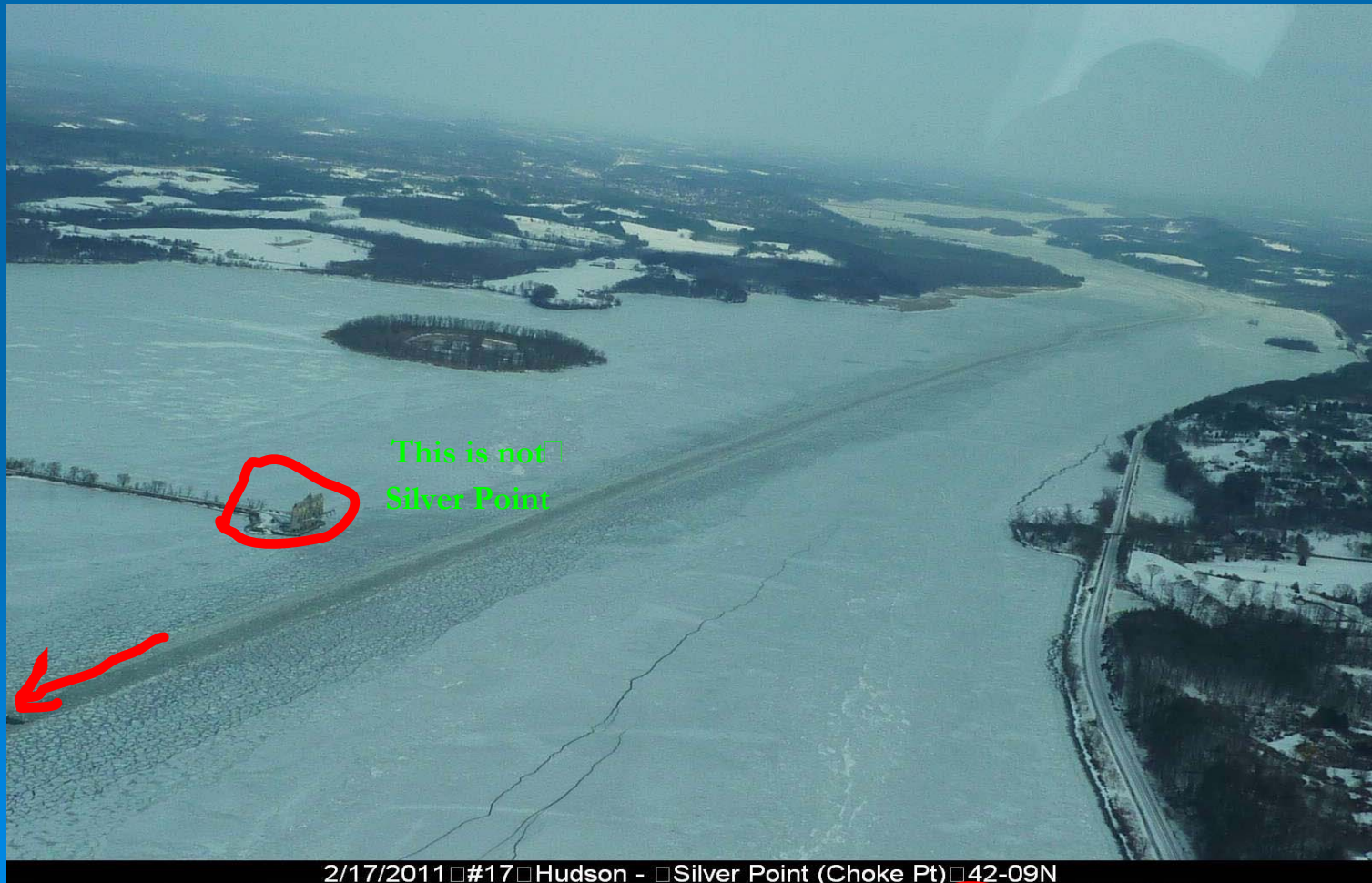
17 FEB 2011





# (17) Silver Point (Choke Point)

17 FEB 2011



2/17/2011 #17 Hudson - Silver Point (Choke Pt) 42-09N

# (18) Catskill

17 FEB 2011

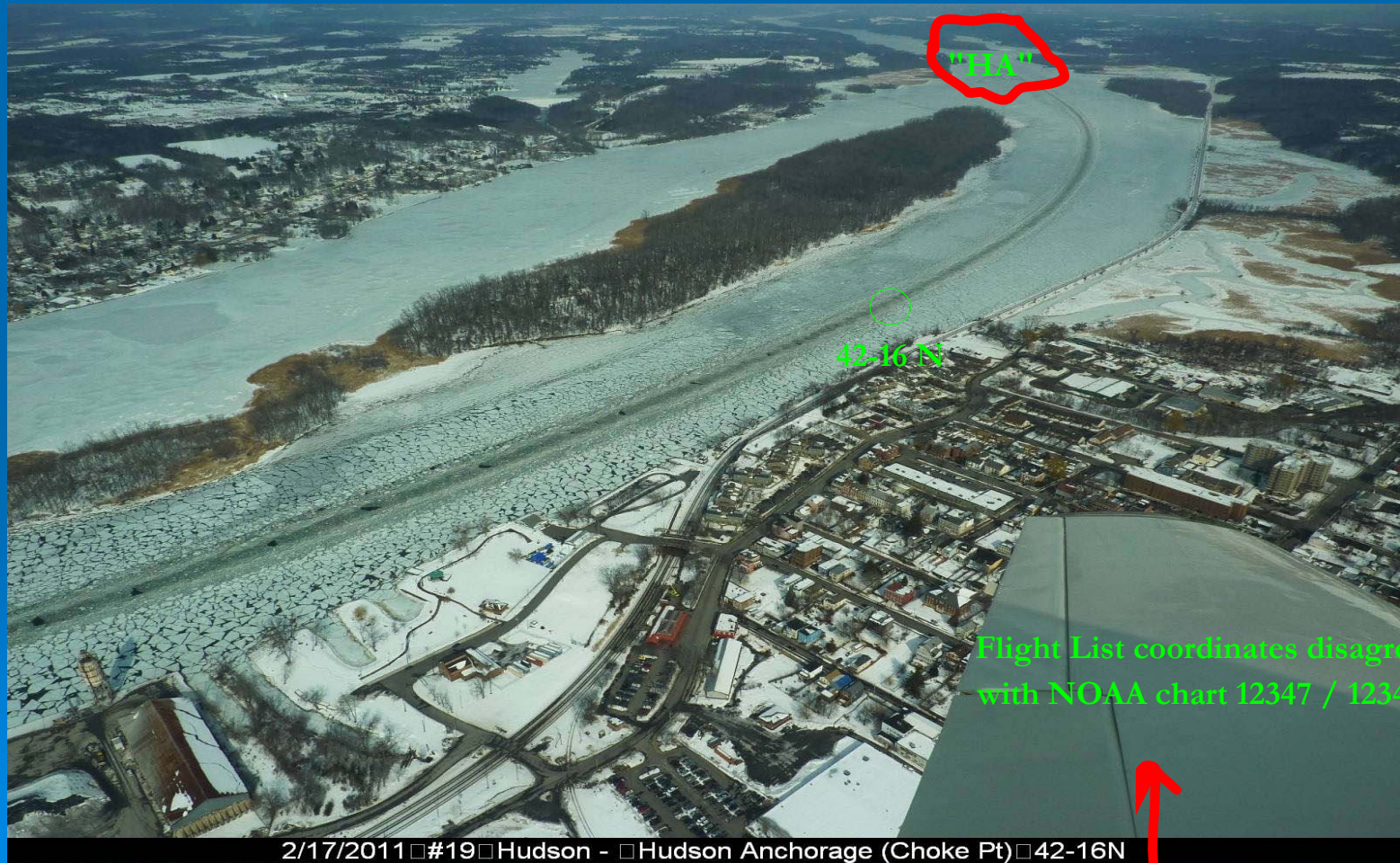


2/17/2011 #18 Hudson - Catskill 42-12N



# (19) Hudson Anchorage (Choke Point)

17 FEB 2011





# (20) Cossackie

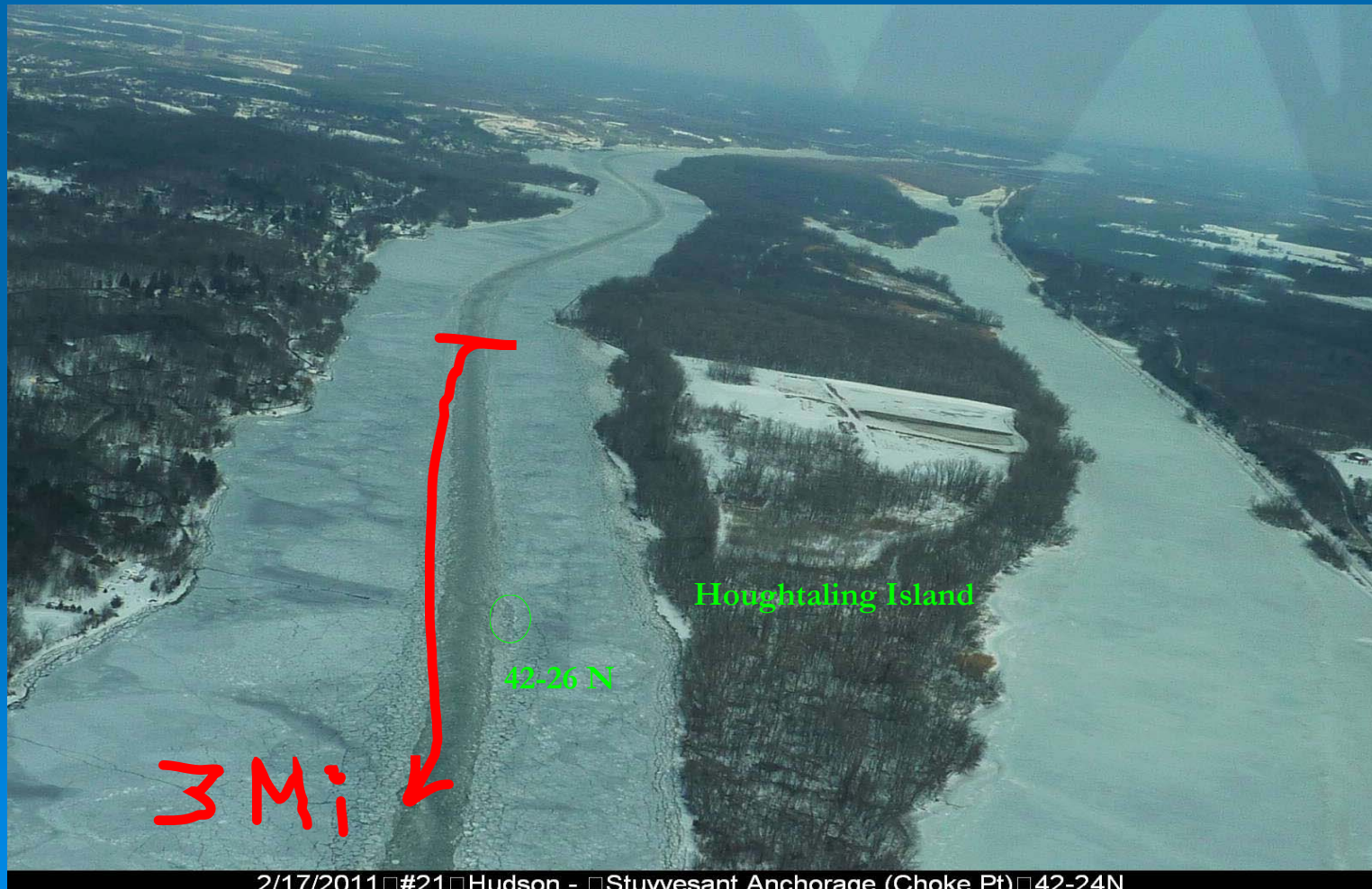
17 FEB 2011



2/17/2011 #20 Hudson - Cossackie 42-21N

# (21) ~~Stuyvesant Anchorage~~ (Choke Point)

17 FEB 2011





# (22) Castleton

17 FEB 2011

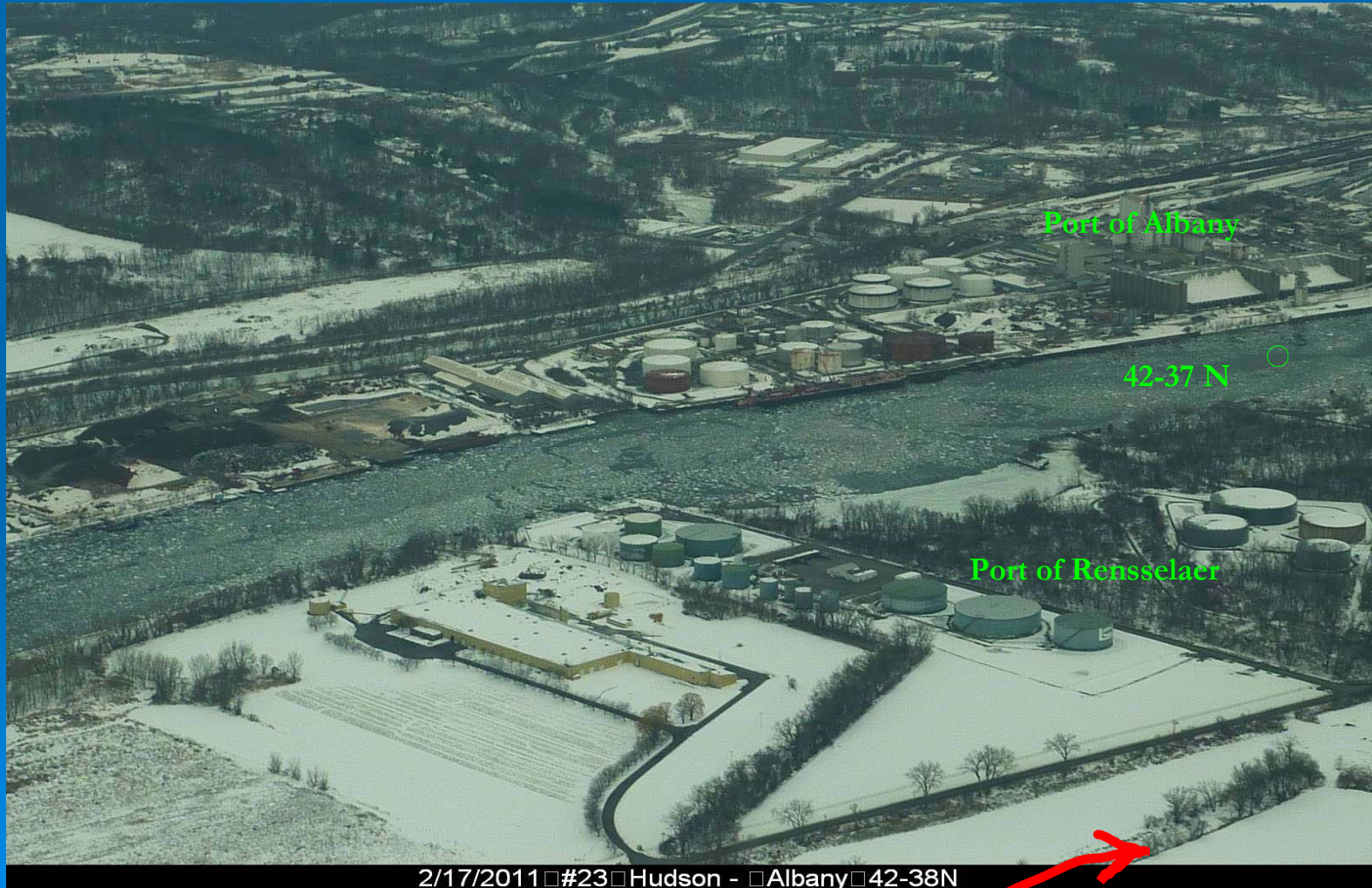


2/17/2011 #22 Hudson - Castleton 42-32N



# (23) Albany

17 FEB 2011



2/17/2011 □ #23 □ Hudson - □ Albany □ 42-38N



# (24) Troy

17 FEB 2011

