

Ice Flight Photos

as of 03 February 2013



(1) Shrewsbury and Navesink Rivers

➤ 27JAN13



(2) Sandy Hook Bay

➤ OPEN water, no photo available



(3) Lower New York Bay

➤ OPEN water, no photo available



(4) Upper New York Bay

➤ OPEN water, no photo available



(5) Newark Bay

➤ OPEN water, no photo available



(6) Throgs Neck Bridge

➤ OPEN water, no photo available



(7) George Washington Bridge

➤ OPEN water, no photo available



(8)Tappan Zee Bridge

➤ 26JAN13

N →



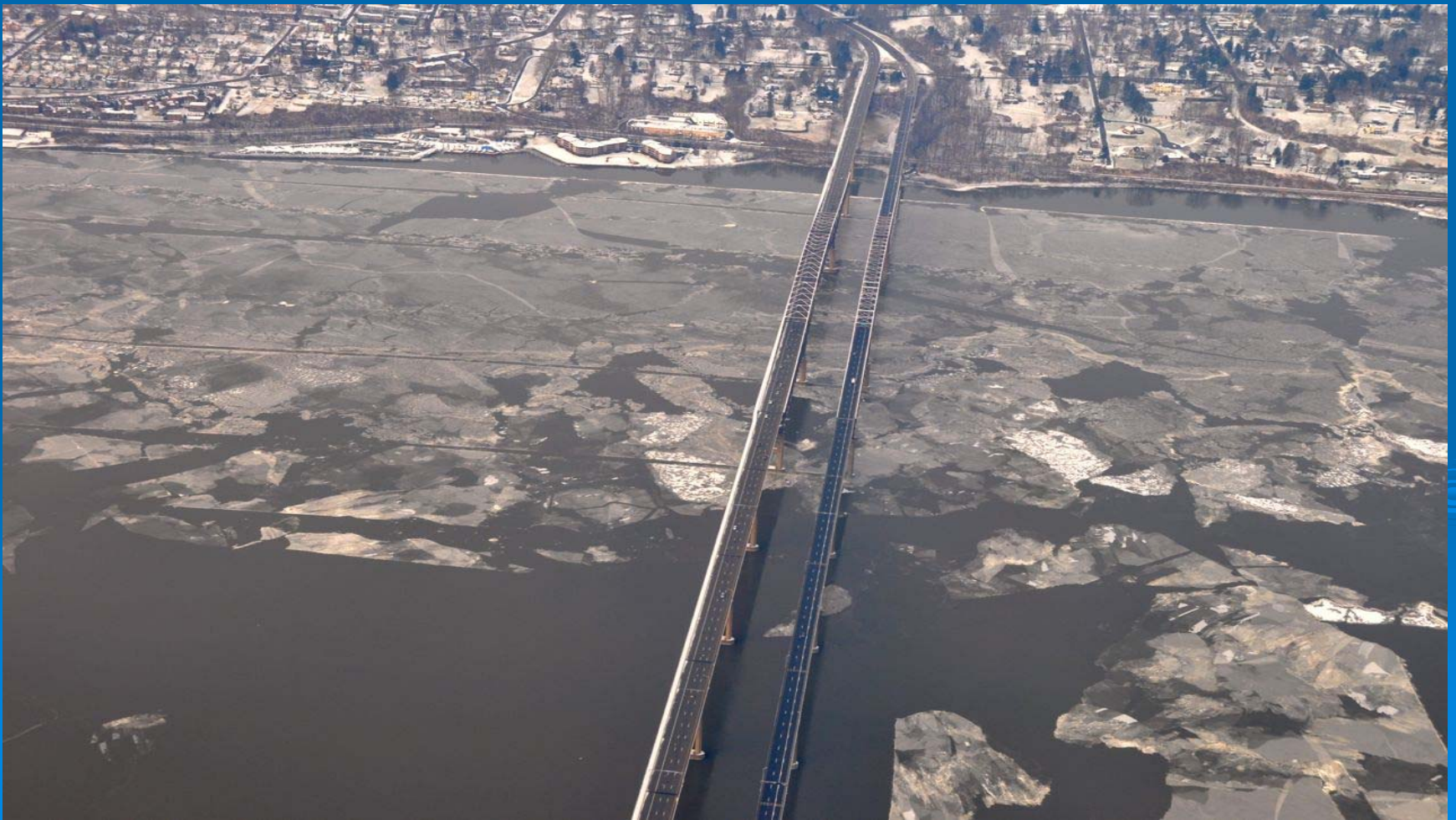
(9) West Point (Choke Point)

➤ 03FEB13



(10) Newburgh Bridge

➤ 03FEB13



(11) Poughkeepsie

➤ 03FEB13



(12) Crum Elbow (Choke Point)

➤ 03FEB13

N →



(13) Hyde Park Anchorage (Choke Point)

➤ 03FEB13

N →



(14) Esopus Meadows (Choke Point)

➤ 03FEB13

N ➡



(15) Kingston

➤ 03FEB13

N →



(16) Saugerties

➤ 03FEB13

N ➡



(17) Silver Point (Choke Point)

➤ 03FEB13



(18) Catskill

➤ 03FEB13



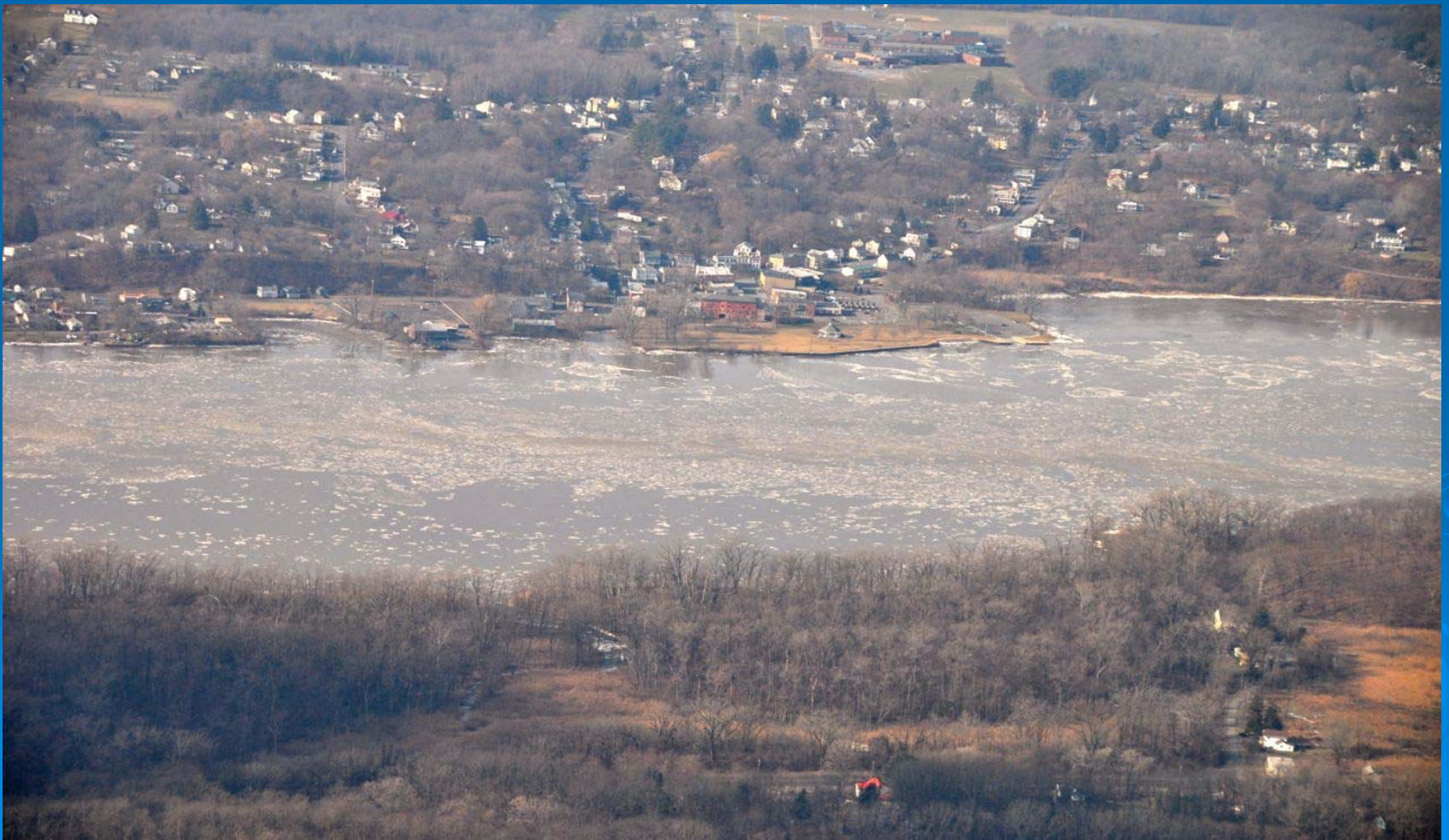
(19) Hudson Anchorage (Choke Point)

03FEB13



(20) Coxsackie

➤ 03FEB13



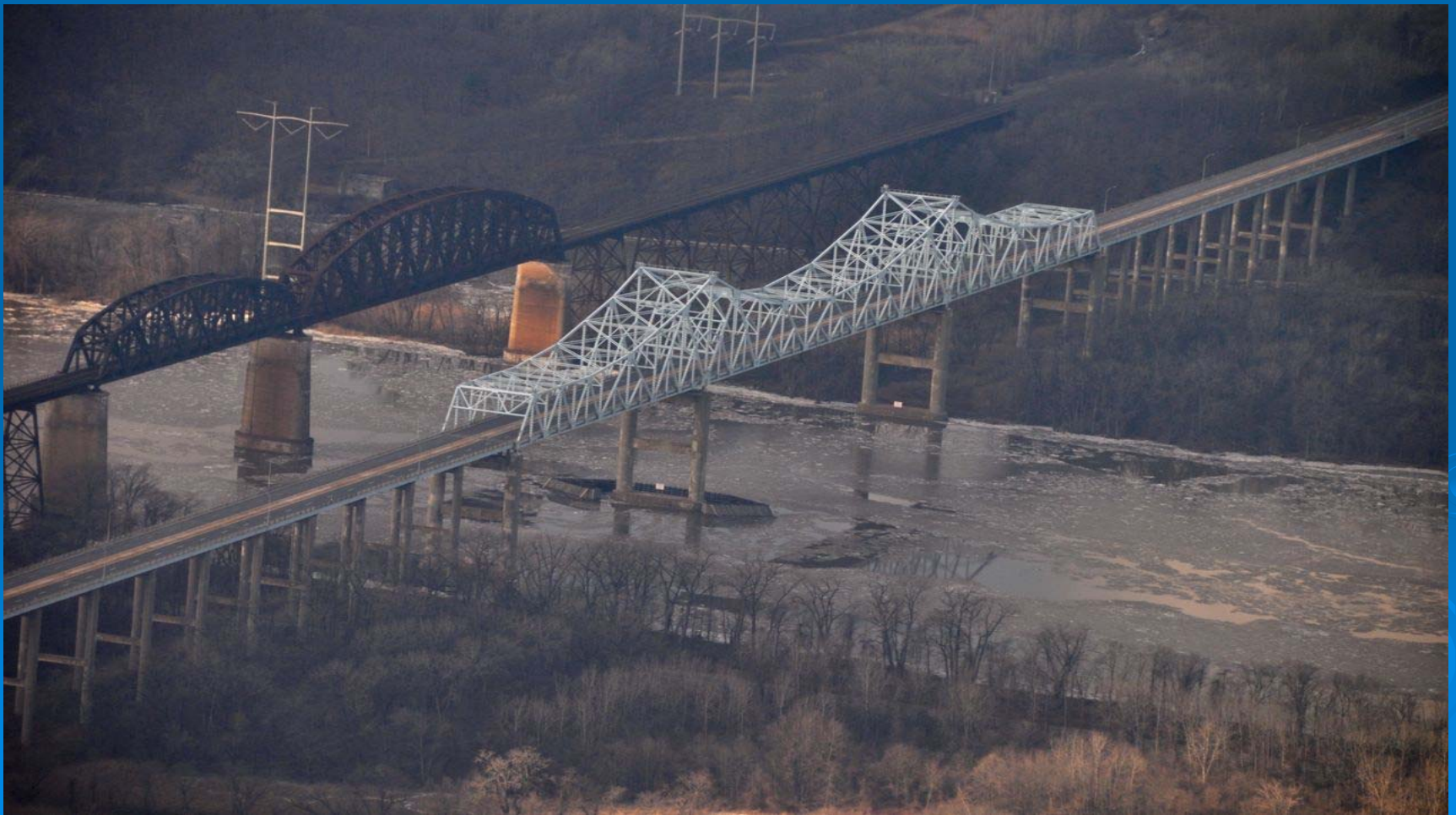
(21) Stuyvesant Anchorage (Choke Point)

➤ 03FEB13



(22) Castleton

➤ 03FEB13



(23) Albany

03FEB13



(24) Troy

➤ 03FEB13

N ➡

